



MISTORIA
ESTATE AGENTS



53 Netherfield Road South Liverpool

£95,000

Leasehold

Mistoria Estate Agents are pleased to offer for sale on Netherfield Road South in the vibrant city of Liverpool, this well-presented two-bedroom, two-bathroom flat offers a perfect blend of comfort and convenience. Spanning an impressive 840 square feet, the property is designed to cater to modern living, making it an ideal choice for both investors and professionals alike.

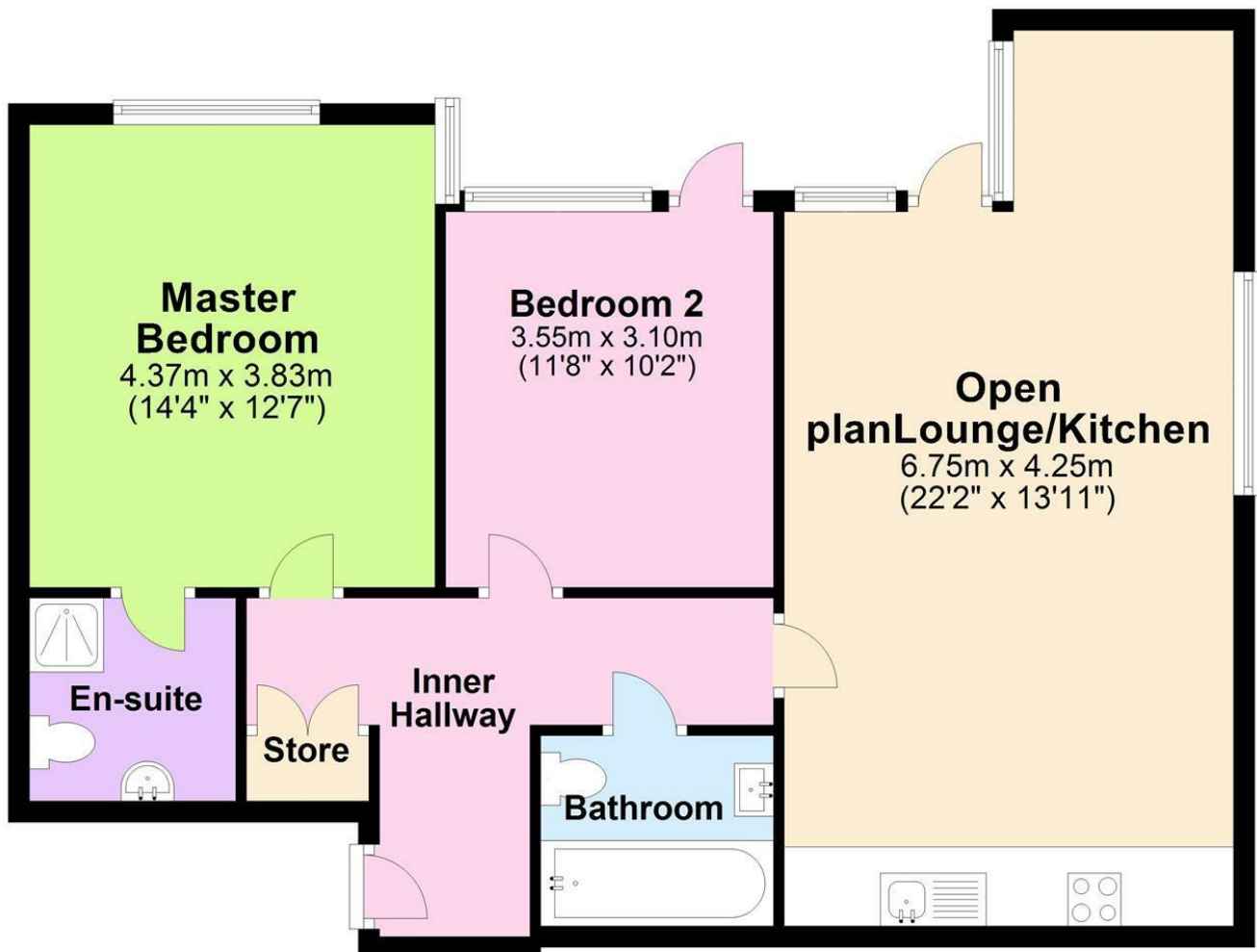
Upon entering, you are greeted by an inviting open-plan lounge and kitchen area, which creates a spacious and airy atmosphere, perfect for entertaining or relaxing after a long day. The master bedroom boasts an ensuite bathroom, providing a private sanctuary, while the second bedroom is equally well-sized, ensuring ample space for guests or a home office. A separate utility room and a main bathroom add to the practicality of this delightful apartment.

The building is equipped with a lift for easy access, and residents benefit from gated parking and intercom access, enhancing both security and convenience. A communal roof terrace offers a lovely outdoor space to unwind and enjoy the views of the surrounding area.



ASKING PRICE OF £100,000.

First Floor

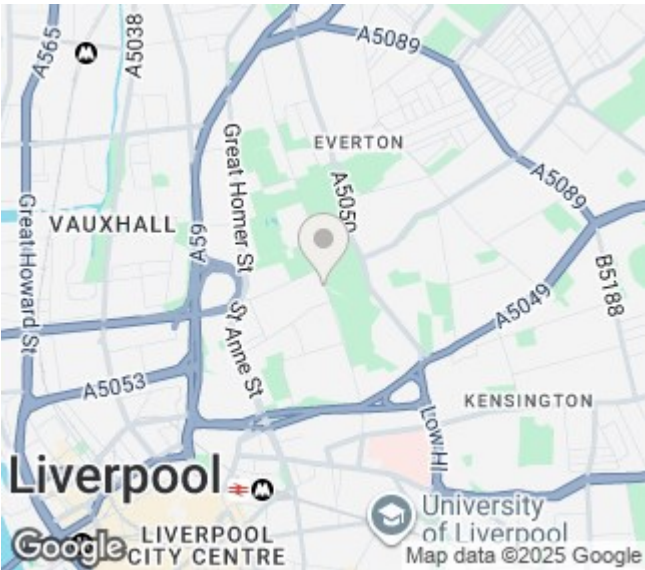


53 CITY VIEW, NETHERFIELD ROAD SOUTH.
2 BED, 2 BATHROOM APARTMENT.



Pall Mall Liverpool Mistoria
22 Pall Mall
Liverpool
L3 6AL

0151 282 1539
info@mistoria.co.uk
mistoria.co.uk



Energy Efficiency Rating		
	Current	Potential
Very energy efficient - lower running costs		
(92 plus) A		
(81-91) B	81	
(69-80) C		
(55-68) D		
(39-54) E		
(21-38) F		
(1-20) G		
Not energy efficient - higher running costs		
England & Wales	EU Directive 2002/91/EC 